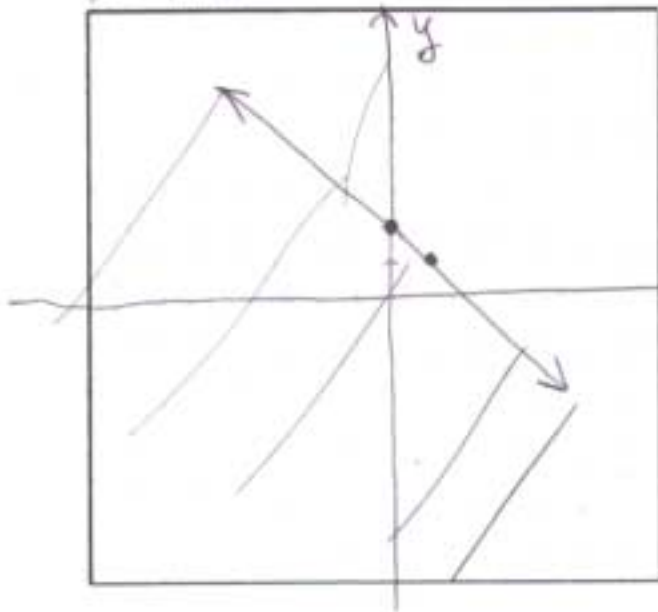


5. Graph the system:

$$y \leq -x + 2$$



$$\begin{array}{r|l} x & y \\ \hline 0 & 2 \\ 2 & 0 \end{array}$$

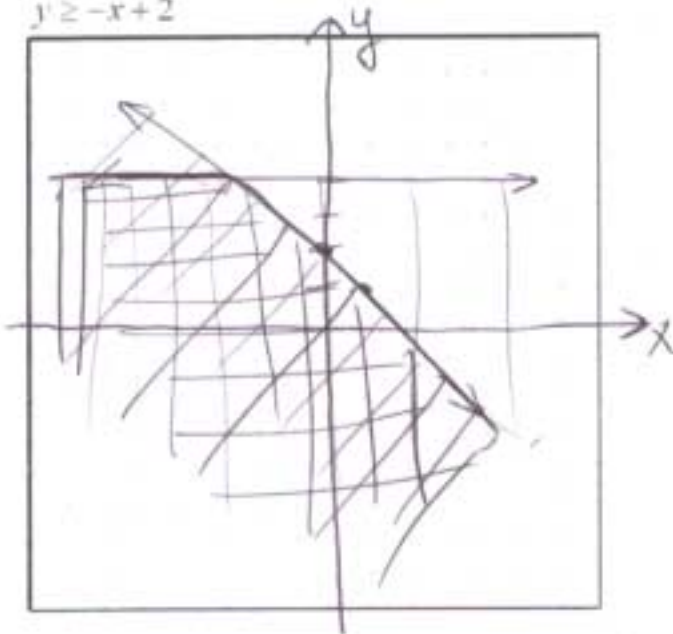
$$(0, 0)$$

$$x \quad 0 \leq -0 + 2 \quad \checkmark$$

6. Graph the system:

$$y \leq 4$$

$$y \geq -x + 2$$

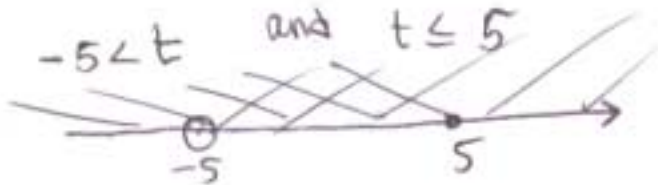


7. Solve and graph:

a)  $-3 < t + 2 \leq 7$

$$\begin{array}{r} -3 < t + 2 \\ -2 \quad -2 \end{array} \quad \begin{array}{r} t + 2 \leq 7 \\ -2 \quad -2 \end{array}$$

$$-5 < t \quad \text{and} \quad t \leq 5$$



$$(-5, 5]$$

b)  $x + 7 \leq -2$  or  $x + 7 \geq 5$

$$\begin{array}{r} -7 \quad -7 \quad +7 \quad -7 \end{array}$$

$$x \leq -9 \quad \text{or} \quad x \geq -2$$

